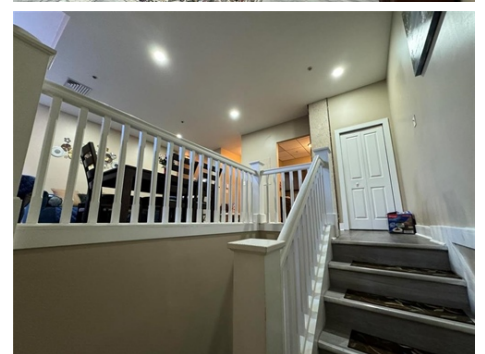
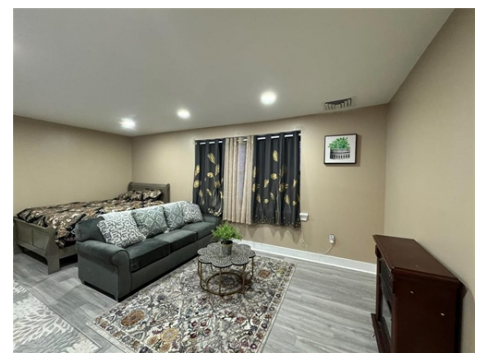
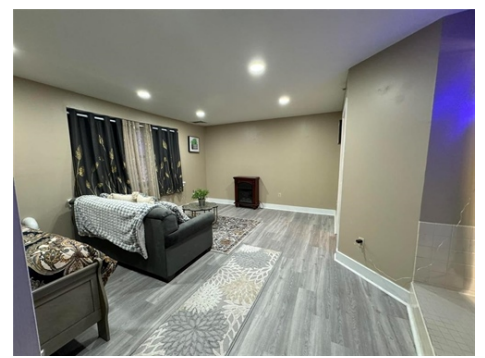
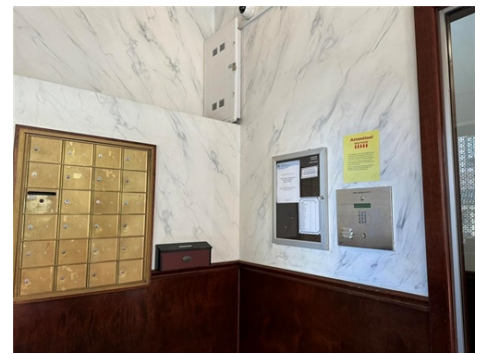




\$ 2,600



535 Main Street, APT 6, Bethlehem, PA 18018

- » Beds: 2 | Baths: 2 Full
- » MLS #: 748018
- » Single Family | 1,459 ft<sup>2</sup>
- » More Info: [535MainAPT6.Is4Rent.com](http://535MainAPT6.Is4Rent.com)



Melanie Onesto  
 REALTOR  
 (610) 248-1394 (Direct)  
 (610) 398-0411 (Office)  
[marketing@homespotmedia.com](mailto:marketing@homespotmedia.com)



The Frederick Group

Howard Hanna The Frederick Group  
 3500 Winchester Road  
 Suite 201  
 Allentown, PA 18104  
 (610) 398-0411

Remarks

FULLY furnished 2-bedroom, 2-bath condo in vibrant downtown Bethlehem, offering modern comfort and style! This spacious unit features high ceilings, granite countertops, modern kitchen, a stackable washer/dryer, and a relaxing jacuzzi tub. Small pets are welcome with an additional monthly fee. Furniture is negotiable for sale, giving you flexibility to make it your own. Tenant pays for electric only, with all other utilities and HOA fees covered by the landlord. One dedicated parking space included. Perfect for easy, luxurious city living and close to all Bethlehem has to offer!

